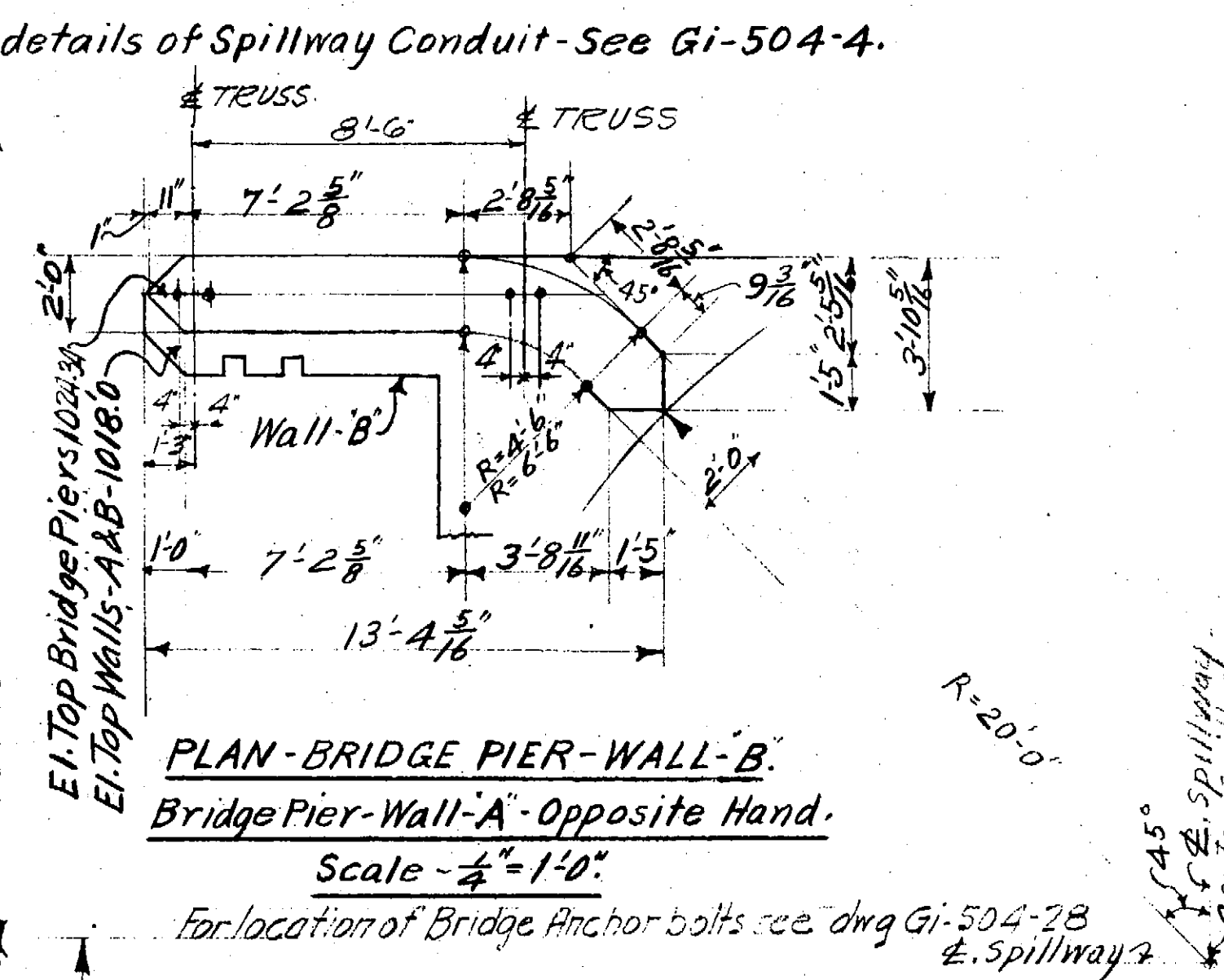


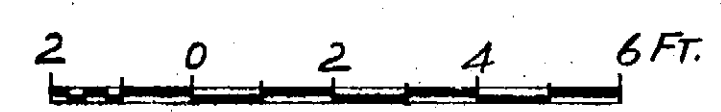
SECTION AT ELEV.-1000'-0"-Scale-3/8"=1'-0"



PLAN-BRIDGE PIER-WALL-B.
Bridge Pier-Wall-A-Opposite Hand.
Scale-1/4"=1'-0"

- Reference Drawings :-
 Gi-504-4.-Details of Spillway Conduit.
 Gi-504-9.-Vertical Section of Spillway
 Gi-504-11 - Placement of Steel Spillway
 Gi-504-5 - Steel for Spillway Conduit
 Gi-504-12 - Steel for Spillway.
 Gi-504-13 - Sections at M,M,O,F&Q.

Revision #1- Dimension 46'-0" changed to 47'-6"-Dec.12,1929.
 #2- " 26'-0" " 27'-6"
 #3- " 5'-0" " 6'-6"
 #4- " 6'-0" " 7'-6"
 #5- " 2'-0" " 3'-6"
 #6- " 12'-7" " 12'-6 3/4"
 #7- " 6'-11" " 7'-0 3/8"
 #8 - Added note-This bay filled with concrete to El.995.0
 #9 Construction Joints Jan. 23, 1929
 N.B.- Drains, Sumps & Ladders Added.



OHIO WATER SERVICE COMP.
 GIRARD PLANT
GIRARD DAM
 HORIZONTAL SECTION OF SPILLWAY.
 Scale-3/8"=1'-0"
 PUBLIC WORKS ENGINEERING CORP.
 40 EXCHANGE PLACE,
 NEW YORK, N.Y.
 CHIEF ENG. P.W.E. CORP. DEC.7,1929.
 VICE PRES. OHIO, W. S. C. FILE NO. 53050007
 CHIEF OPER. ENG. P.W.S. CORP. Gi-504-10

Drawn by-J.H.
 Checked by-*[Signature]*

*See vertical section of spillway
 on P.W.E. Gi-504-9*